



## Dates for your diary:

### **Monday 22<sup>nd</sup> May**

- Parent/Carer forum online, 5.30 – 6.30pm – see email for link

### **Thursday 25<sup>th</sup> May**

- Acer class assembly, 2.45pm in Main Hall

### **Friday 26<sup>th</sup> May**

- Ice cream/ice pole sale after school to raise money for PTA

### **Thursday 22<sup>nd</sup> and Friday 23<sup>rd</sup> June**

- Year 4 residential to Fryland's Wood

### **Friday 30<sup>th</sup> June**

- Sports day, 9 – 11am, for Reception, Year 1 and Year 2

### **Monday 3<sup>rd</sup> – Friday 7<sup>th</sup> July**

- Culture Week

### **Saturday 8<sup>th</sup> July**

- PTA Summer Fair

### **Monday 10<sup>th</sup> July**

- Nursery sports day, 9.30 – 10.00am

### **Tuesday 11<sup>th</sup> July**

- Welcome picnic for families starting in Nursery and Reception in September 2023

### **Wednesday 12<sup>th</sup> and Thursday 13<sup>th</sup> July**

- Parent/Carer evenings

### **Thursday 13<sup>th</sup> July**

- Nursery sports day, 1.30 – 2.00pm

### **Friday 14<sup>th</sup> July**

- Sports day, 9 – 11am, for Year 3, Year 4, Year 5, Year 6

### **Wednesday 19<sup>th</sup> July**

- Year 6 production performances at 2pm and 7pm, Main Hall

### **Friday 21<sup>st</sup> July**

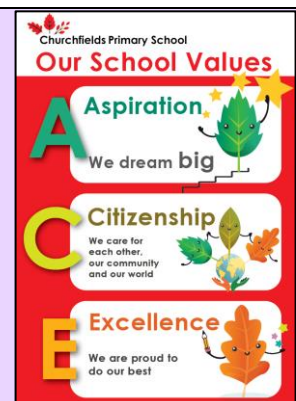
- Last day of school year

Dear Parents and Carers,

Lots of examples of Aspiration, Citizenship and Excellence this week with a few highlights picked out for the newsletter. Next week, I will be sharing some common themes from the recent parent/carers surveys and forum meetings with you in the newsletter and asking for your views – so look out for that!

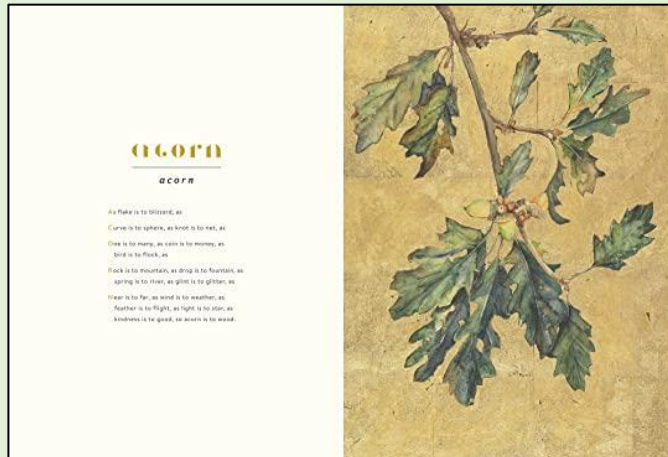
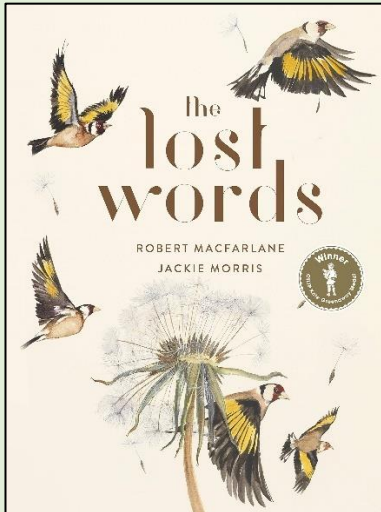
Have a lovely weekend,

Sarah Atherton  
Headteacher





## Year 1 take Inspiration from Nature



Year 1 have been reading 'The Lost Words' - a beautifully illustrated book about the words we are losing as the plants and animals around us become less common. They went out to explore their surroundings and wrote their own illustrated poems inspired by what they found.







## acorn

*acorn*

- A**s flake is to blizzard, as
- C**urve is to sphere, as knot is to net, as
- O**ne is to many, as coin is to money, as  
bird is to flock, as
- R**ock is to mountain, as drop is to fountain, as  
spring is to river, as glint is to glitter, as
- N**ear is to far, as wind is to weather, as  
feather is to flight, as light is to star, as  
kindness is to good, so acorn is to wood.

**T**ulip petals red and pretty  
**U**nder the bright dazzling  
sun  
**L**ovely leaves on the stem  
**I**n a flower bed shining  
bright as a gem  
**P**rotected by pollination all  
around with more and  
more flowers to be found

*by Martha*





**R**ough rigid roots reaching  
onto the soil and winding  
into the ground

**O**pen out in nature and  
wild in the breeze

**O**n an oak tree there is  
roots

**T**he tree gets tangled with  
trusty roots

**S**itting strongly like a solid  
skilful rock

*by Stanley*

**T**ulip as tall as lavender

**U**nderneath the glittering  
sky

**L**eaves as long as a tree  
branch

**I**mpressive nature

**P**retty perfect plant it  
makes me feel peaceful

*by Anya*







## Rugby Enthusiast



Aneurin in Year 3 spent the weekend in Norfolk at a rugby tournament for Beckenham RFC. Saturday was training on the beach, and Sunday was the tournament. There were 130 teams and around 1,500 players, so quite a big event. He showed teamwork, leadership and perseverance – well done!

## Medal Winning Gymnast



Margaux in Year 2 received a medal at her gymnastics competition on Sunday. Margaux thought that she might not be able to complete her routine so was blown away when she won a medal. Well done!

## National Football Success



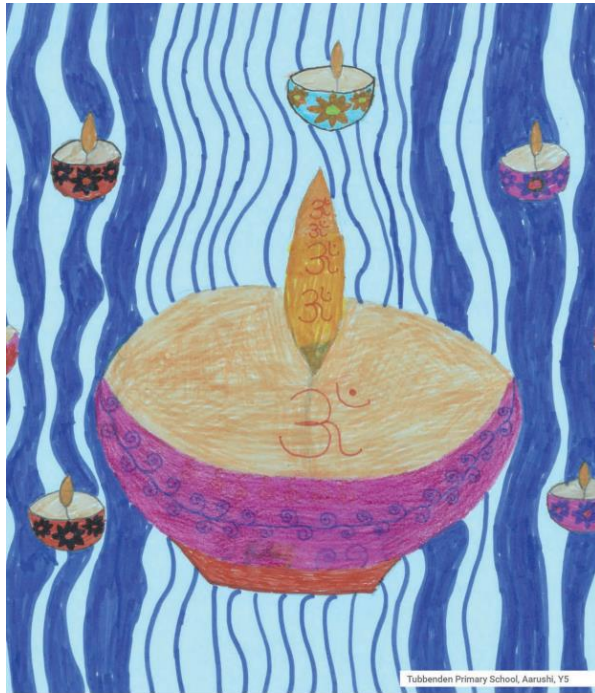
Last year, Finlay in Year 6 (*bottom left in this photo*), was selected to represent Bromley Schools' District Football. Since then Fin and his teammates have enjoyed tremendous success, including reaching the final of the English Schools' National Cup against Liverpool which was played at the Stoke City professional ground.

Recently, Bromley played in the Jersey Festival where they won five games and drew just one. This was the best result in the 47-year history of going there. We congratulate Fin and the team on their amazing achievements!





## Bromley Schools' RE Calendar Competition



### Religious Education

Calendar 2022-2023



### March 2023



Monday	Tuesday	Wednesday	Thursday	Friday	Saturday	Sunday
		1 St David of Wales Christian	2	3	4	5
6 Feast of Esther Judaism	7 Purim Judaism	8	9	10	11	12
13	14	15	16	17 St Patrick's Day Christian	18	19 St Joseph's Day Christian Midway Festival Christian
20	21 Mardi Gras Mormon Lent Wiccan/Pagan	22 Chaitanya Navami Hinduism Anantashakti Lent Wiccan/Pagan	23	24	25 Annunciation of the Blessed Virgin Mary Christian	26 Blessed Eul Birth of Princess Zoroaster Zoroastrian
27	28	29	30 Maha Navami Hinduism	31		

Key: ■ Bahai ■ Buddhist ■ Christian ■ Hinduism ■ Humanism ■ Judaism  
■ Mormon ■ Islam ■ Wiccan/Pagan ■ Rastafarian ■ Shinto ■ Sikhism ■ Zoroastrian

The competition to have a picture chosen for the 2023/24 is now open to all pupils in Bromley schools. This year's themes are:

Reception, Year 1 and Year 2

How do we know they are holy/special? This can include religious leaders or significant figures from religions

Years 3 – 6

What makes a place holy/special? Pupils may choose to focus on places of worship or pilgrimage.

You can see all of last year's winners by [clicking here](#).

If you would like to take part, all entries must be on **A4 portrait** paper, with no wording on the front and preferably on coloured paper and /or using strong bold colours e.g. felt pens or paints rather than paler pencils. Ideally the drawings or paintings should fill the whole page.

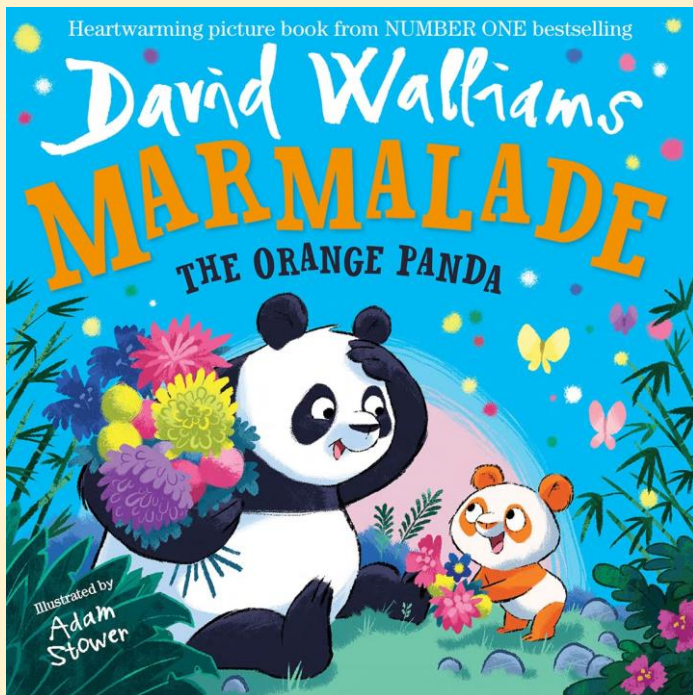
The pictures should be **labelled on the back** clearly with the child's name, school and year group –please do not label the front.

Entries should be posted to Andrew Morley, The School Standards Team, First Floor Stockwell Building, Stockwell Close, Bromley BR1 3UH **before Friday 9<sup>th</sup> June 2023**.

Or you can bring it into school by Tuesday 6<sup>th</sup> June and we will post it for you.



## Birthday Book Donations



Happy birthday Finley and thank you for the book!

### Book Suggestions

We really appreciate the birthday books that come into school to keep our libraries fresh and exciting.

We have been asked by some parents/carers for ideas for new and interesting books to add to our collection, especially for the older children.

In response to this we have set up wish lists on Amazon that you can use to help choose the books.

Please note: you do not need to purchase books from Amazon or only the ones on these lists - all donations are very gratefully received!

[Nursery and Reception wishlist](#)

[Year 1 wishlist](#)

[Year 2 wishlist](#)

[Year 3 wishlist](#)

[Year 4 wishlist](#)

[Year 5 wishlist](#)

[Year 6 wishlist](#)

## School Uniform - Reminder

We want children to join together as one school community and to feel pride to belong to Churchfields.

**Our school uniform is compulsory** and has been designed to get the balance between looking smart and being practical for a busy, active day at primary school. You can find the uniform list on our website [CLICK HERE](#)

**Jewellery is not to be worn.** If your child has pierced ears only studs may be worn in school.

Uniform with the Churchfields logo is **optional** and can be purchased through [Marks & Spencer's online uniform shop.](#)





# Churchfields News



Quality First  
Education Trust

Churchfields Road, Beckenham, Kent, BR3 4QY Tel: 020 86505247

# PENGE FESTIVAL FETE

  
PENGE  
SE20 BID  
A BUSINESS IMPROVEMENT  
DISTRICT (BID) FOR PENGE



Saturday 3rd June  
11-5

ROYSTON FIELD, FRANKLIN ROAD,  
BEHIND SAINSBURYS CAR PARK,  
PENGE



- bouncy castle •
- facepainting •
- dog competition •
- cadet competition •
- giant slide •
- entertainment •
- market stalls •
- yummy food •
- and much more!



For more information visit: [www.pengefestival.org](http://www.pengefestival.org)





# Churchfields News



Quality First  
Education Trust

Churchfields Road, Beckenham, Kent, BR3 4QY Tel: 020 86505247

## Class Assembly Dates 2022/23

Class assemblies will be held in the school's Main Hall, starting at 2.45pm.

### Summer Term

25.05.23	ARC – Acer
15.06.23	Reception – Beech
22.06.23	Year 2 – Hickory
29.06.23	Year 5 - Olive

**Any good news, something to share or celebrate with the Churchfields community?**

**Please do email us on [admin@churchfields.q1e.org.uk](mailto:admin@churchfields.q1e.org.uk)**

## Term Dates 2022/23

### Summer Term 2023

Last day of Summer 1 term: Friday 26 May

Spring half term holiday: Monday 29 May – Friday 2 June

Inset Day: Monday 5 June – school closed to children

First day of Summer 2 term: Tuesday 6 June

Last day of Summer 2 term: Friday 21 July

Term Dates for 2023/24 on the next page



If you are worried about something ....  
If you are worried about someone else.....



You can talk to  
**ANYONE** who works  
for the school

Safeguarding is the  
responsibility of EVERYONE



Our first priority is to ensure all children and adults are safe.

Please do talk to any member of staff if you have any worries for yourself or others in our community.



## Term Dates 2023/24

### **Autumn Term 2023**

Monday 4 <sup>th</sup> and Tuesday 5 <sup>th</sup> September 2023	INSET days, school closed to children
Wednesday 6 <sup>th</sup> September 2023	First day of Autumn 1 term
Friday 20 <sup>th</sup> October 2023	Last day of Autumn 1 term
Monday 23 <sup>rd</sup> to Friday 27 <sup>th</sup> October 2023	Autumn half term holiday
Monday 30 <sup>th</sup> October 2023	INSET day, school closed to children
Tuesday 31 <sup>st</sup> October 2023	First day of Autumn 2 term
Thursday 21 <sup>st</sup> December 2023	Last day of Autumn 2 term

### **Spring Term 2024**

Monday 8 <sup>th</sup> January 2024	INSET day, school closed to children
Tuesday 9 <sup>th</sup> January 2024	First day of Spring 1 term
Friday 9 <sup>th</sup> February 2024	Last day of Spring 1 term
Monday 12 <sup>th</sup> to Friday 16 <sup>th</sup> February 2024	Spring half term holiday
Monday 19 <sup>th</sup> February 2024	First day of Spring 2 term
Thursday 28 <sup>th</sup> March 2024	Last day of Spring 2 term

### **Summer Term 2024**

Monday 15 <sup>th</sup> April 2024	First day of Summer 1 term
Monday 6 <sup>th</sup> May 2024	May Bank Holiday, school closed
Friday 24 <sup>th</sup> May 2024	Last day of Summer 1 term
Monday 27 <sup>th</sup> to Friday 31 <sup>st</sup> May 2024	Summer half term holiday
Monday 3 <sup>rd</sup> June 2024	INSET day, school closed to children
Tuesday 4 <sup>th</sup> June 2024	First day of Summer 2 term
Wednesday 24 <sup>th</sup> July 2024	Last day of Summer 2 term